



MICRODIAMONDS IDENTIFIED AT WEBB KIMBERLITE FIELD

HIGHLIGHTS

- 4 microdiamonds identified in wide spaced reconnaissance loam sampling, one in each of 4 loam samples out of a total of 67 samples taken across the Webb kimberlite field.
- 1 microdiamond found in an aircore drill sample over a magnetic kimberlite target, out of 2 drill samples processed to date.
- Diamond indicator minerals identified in 30 out of 67 loam samples, outlining a 20km-long anomaly coincident with numerous kimberlite targets, open to the NE.
- Processing of a further 20 drill samples from 7 kimberlite targets in progress.

As recently announced (MEI December 2013 Quarterly Report), first pass aircore drilling on the Webb kimberlite field discovery totals 24 drill holes for 1657m on 16 kimberlite targets. In addition 46 line-km of ground magnetic surveys have been completed together with 67 loam samples totaling 4.9 tonnes of samples taken on a broad grid pattern over the kimberlite field. An aeromagnetic image of the project area is shown in Figure 1. A summary of the drill locations and results is shown in Appendix 1.

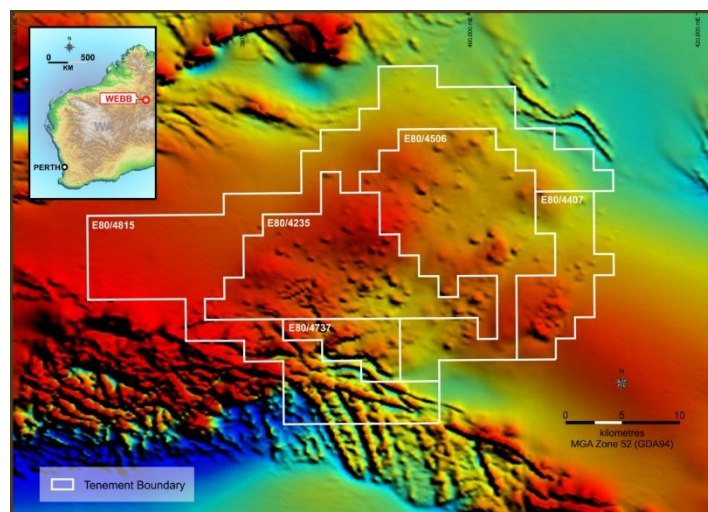


Figure 1.

Webb Diamond JV, Aeromagnetic Image

Processing of the 67 loam samples and two aircore drill samples has identified a microdiamond in each of four loam samples and a microdiamond in one of two drill samples processed to date, with a further 20 drill samples yet to be processed. In addition, diamond indicator minerals have been identified in 30 out of the 67 loam samples. The microdiamond and diamond indicator minerals contained in the loam samples outline a large 20km-long anomaly some 3km to 5km wide, open to the NE, coincident with numerous kimberlite targets, as shown in Figure 2.

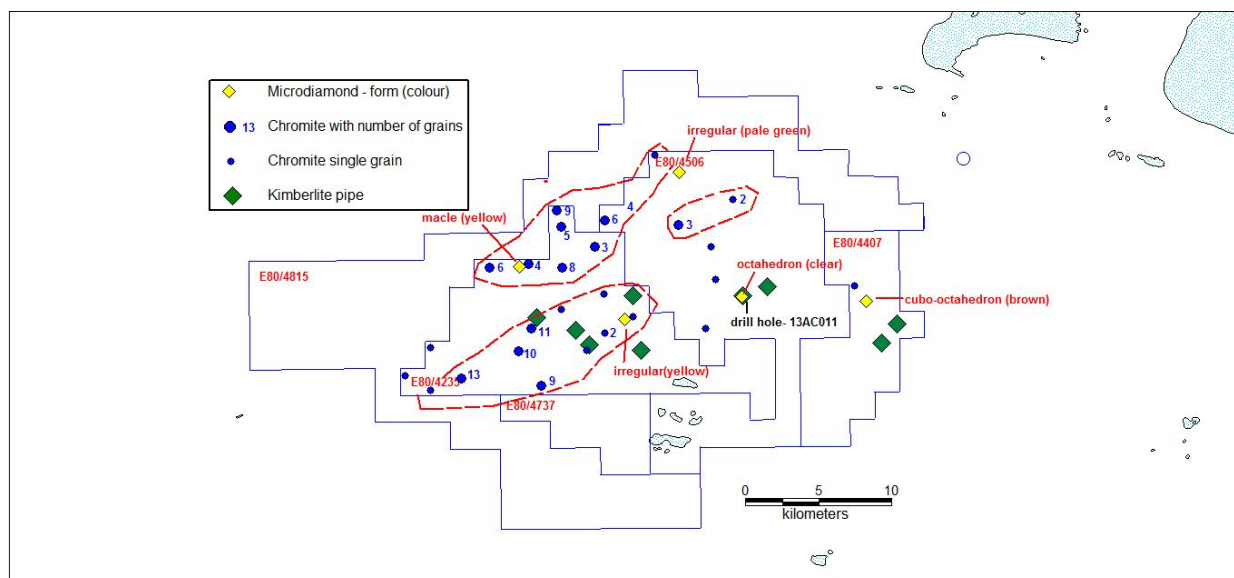


Figure 2
Loam Sampling and Drilling Results

One loam sample which contained a microdiamond is located in the eastern part of the project area in close proximity to drill hole W13AC011 on Target KJ25 which also reported a microdiamond in a drill sample taken from overburden sediments overlying a kimberlite intersection. Samples from this kimberlite have yet to be processed. So far 9 kimberlite occurrences have been identified, at the locations shown in Figure 2.

Table 1
Webb Microdiamond Descriptions

Sample ID	Sample Type	Microdiamond dimensions mm	Diamond Description
1310008	loam	0.3x0.2x0.1	Diamond - pale green, subtranslucent, included, irregular
1310013	loam	0.1x0.1x0.1	Diamond - well formed cubo-octahedron, pale brown, clear
1310038	loam	0.15x0.15x0.1	Diamond - Greenish yellow, fractured or resorbed, rounded, translucent, irregular
1310054	loam	0.17x0.15x0.1	Diamond - yellow macle
1309005	drill	0.25x0.2x0.15	Diamond - colourless composite octahedral form

Three of the five microdiamonds that were recovered exhibit the characteristic crystalline habits of diamonds derived from kimberlite, while the remaining two microdiamonds are fragments. Descriptions of the microdiamonds are shown in Table 1. Further details of the sampling techniques and exploration results are reported in Appendix 2. Other

information on previously released test work on the kimberlites can be viewed in MEI ASX release of 1 August 2013.

It should be emphasized that these results are preliminary, with processing of an additional 20 drill samples yet to be completed along with any validation work to be completed on positive results. The significance of these results is open to interpretation in that microdiamonds occurring in surface material can potentially be derived from various sources either near or distal. However, **the occurrence of microdiamonds and indicator minerals spatially coincident with more than 80 magnetic targets, the majority of which remain untested, provides a compelling case to accelerate the pace of exploration in order to assess the diamond potential of this large kimberlite field.**

A detailed high resolution aeromagnetic survey is currently being planned, together with infill loam sampling, in order to identify and prioritise targets for drill testing. A programme of reverse circulation drilling is then envisaged to test the priority targets. Further results from ongoing test work on the loam and drill samples will be released as they come to hand and following interpretation and validation.

Joint venture partner GeoCrystal Ltd has earned 51% of Meteoric's interest in the project tenements, comprising wholly-owned tenements and one tenement (E80/4506) in which Meteoric has the right to earn or acquire a 90% interest, by expenditure of \$0.5M and completion of 1,000m of drilling. GeoCrystal may then elect to sole fund a further \$1.5M within two years to earn an additional 19% (70% total) of Meteoric's interest.

For more information on the company visit www.meteorite.com.au
Please direct enquiries to:

Graeme Clatworthy
Executive Director
Phone +61 8 9485 2836
Mob 0418 902 341

George Sakalidis
Non-executive Director
Phone +61 8 9485 2836
Mob 0411 640 337

Tom Reddicliffe
Technical Director
GeoCrystal Limited
Mob 0437 384 213

The information in this report that relates to Exploration Results is based on information compiled or reviewed by Tom Reddicliffe BSc (Hons), MSc. Tom Reddicliffe, a Competent Person who is a Fellow of the Australasian Institute of Mining and Metallurgy. Tom Reddicliffe is a self-employed consultant to the Meteoric Resources NL – GeoCrystal Limited joint venture and a director of GeoCrystal Limited. Tom Reddicliffe has sufficient experience which is relevant to the style of mineralisation and type of deposit under consideration and to the activity which he is undertaking to qualify as a Competent Person as defined in the 2012 edition of the 'Australasian Code of Reporting of Exploration Results, Mineral Resources and Ore Reserves'. Tom Reddicliffe consents to the inclusion in this report of his information in the form and context in which it appears.

APPENDIX 1

Air Core Drill Hole Summary

Drill Hole Number	Target	Easting GDA94	Northing GDA94	RL m	Depth m	Bottom of Hole Lithology
W13AC-001	KJ13	393300	7484935	403	96	Kimberlite
W13AC-002	KJ7	389755	7485270	418	107	Kimberlite
W13AC-003	KJ8	388840	7486260	393	74	Kimberlite
W13AC-004	KJ5	386168	7487153	387	79	Kimberlite
W13AC-005	KJ2	392740	7488630	380	82	Kimberlite
W13AC-006	KJ26	406085	7487125	408	66	Sediments
W13AC-007	KJEM1	410755	7484870	400	49	Sediments
W13AC-008	KJ36	409620	7485370	411	86	Sediments
W13AC-009	KJ27	409578	7486436	398	54	Sediments
W13AC-010	KJ25	400369	7488650	400	84	Sediments
W13AC-011	KJ25	400269	7488650	401	90	Kimberlite
W13AC-012	KJ25	400471	7488643	401	57	Sediments
W13AC-013	KJ24	401964	7489240	395	86	Kimberlite
W13AC-014	KJ24	402064	7489240	395	73	Sediments
W13AC015	KJ27	409550	7486460	397	80	Sediments
W13AC016	KJ27	409520	7486510	400	69	Sediments
W13AC017	KJ36	409745	7485385	398	85	Kimberlite
W13AC018	KJ37	410000	7485740	392	41	Sediments
W13AC019	KJ38	408778	7486205	402	57	Sediments
W13AC020	KJ27	409645	7486445	398	42	Sediments
W13AC021	KJ39	410809	7486692	403	89	Kimberlite
W13AC022	KJ44	403985	7490290	397	55	Sediments
W13AC023	KJ23	395748	7492971	409	56	Sediments

All holes are vertical (no azimuth).

APPENDIX 2

JORC Code, 2012 Edition – Table 1

Section 1 Sampling Techniques and Data

Criteria	JORC Code explanation	Commentary
Sampling techniques	<ul style="list-style-type: none"> • <i>Nature and quality of sampling (e.g. cut channels, random chips, or specific specialised industry standard measurement tools appropriate to the minerals under investigation, such as down hole gamma sondes, or handheld XRF instruments, etc.). These examples should not be taken as limiting the broad meaning of sampling.</i> • <i>Include reference to measures taken to ensure sample representivity and the appropriate calibration of any measurement tools or systems used.</i> • <i>Aspects of the determination of mineralisation that are Material to the Public Report.</i> • <i>In cases where 'industry standard' work has been done this would be relatively simple (e.g. 'reverse circulation drilling was used to obtain 1 m samples from which 3 kg was pulverised to produce a 30 g charge for fire assay'). In other cases more explanation may be required, such as where there is coarse gold that has inherent sampling problems. Unusual commodities or mineralisation types (e.g. submarine nodules) may warrant disclosure of detailed information.</i> 	<ul style="list-style-type: none"> • Surface lag/loam samples were collected within the tenements at an average density of 1 sample per 7km². The samples comprised surface scrapings to a depth of 5mm which were sieved in the field at minus 1mm. Samples were collected from low lying inter-dune areas and had an average weight of 72kg within a range of 67kg to 79kg. This sampling technique is aimed at recovering heavy minerals which concentrate on land surfaces as a consequence of deflationary processes. The heavy minerals will be derived from all of the weathering rocks types however in this instance the targeted heavy minerals are the kimberlite indicator minerals including chromite and microdiamonds. • Variously composited drill chip samples were taken from those drill holes that intersected the weathered volcanic intrusions. These samples were unsieved and varied in weight from 15kg to 200kg. The sampling was aimed at recovering both kimberlite indicator minerals and microdiamonds. • Small samples were taken for geochemical analysis from drill chips representing both the weathered volcanic and the overlying sedimentary sequences. These samples were taken as deemed appropriate to aide in determining the geological boundaries of the volcanic intrusive.
Drilling techniques	<ul style="list-style-type: none"> • <i>Drill type (e.g. core, reverse circulation, open-hole hammer, rotary air blast, auger, Bangka, sonic, etc.) and details (e.g. core diameter, triple or standard tube, depth of diamond tails, face-sampling bit or other type, whether core is oriented and if so, by what method, etc.).</i> 	<ul style="list-style-type: none"> • The drilling technique used was air-core, with a diameter of 760 mm. • A full list of drill holes is available in Appendix 1.
Drill sample recovery	<ul style="list-style-type: none"> • <i>Method of recording and assessing core and chip sample recoveries and results assessed.</i> • <i>Measures taken to maximise sample recovery and ensure representative nature of the samples.</i> • <i>Whether a relationship exists between sample recovery and grade</i> 	<ul style="list-style-type: none"> • The drilling was reconnaissance in nature, primarily aimed at identifying rock type, and providing drill chip samples for heavy mineral recovery and geochemical analysis, hence no specialised drill chip recovery or sampling techniques were required.

Criteria	JORC Code explanation	Commentary
	<i>and whether sample bias may have occurred due to preferential loss/gain of fine/coarse material.</i>	<ul style="list-style-type: none"> • Drill chips were collected at consecutive 1m intervals from the drill and laid out on the ground for subsequent logging and sampling.
Logging	<ul style="list-style-type: none"> • <i>Whether core and chip samples have been geologically and geotechnically logged to a level of detail to support appropriate Mineral Resource estimation, mining studies and metallurgical studies.</i> • <i>Whether logging is qualitative or quantitative in nature. Core (or costean, channel, etc.) photography.</i> • <i>The total length and percentage of the relevant intersections logged.</i> 	<ul style="list-style-type: none"> • All chip holes were geologically logged from 1m samples and sub samples were stored in plastic sample boxes. • None of the drill holes have been geophysical logged or surveyed for orientation.
Sub-sampling techniques and sample preparation	<ul style="list-style-type: none"> • <i>If core, whether cut or sawn and whether quarter, half or all core taken.</i> • <i>If non-core, whether riffled, tube sampled, rotary split, etc. and whether sampled wet or dry.</i> • <i>For all sample types, the nature, quality and appropriateness of the sample preparation technique.</i> • <i>Quality control procedures adopted for all sub-sampling stages to maximise representivity of samples.</i> • <i>Measures taken to ensure that the sampling is representative of the in situ material collected, including for instance results for field duplicate/second-half sampling.</i> • <i>Whether sample sizes are appropriate to the grain size of the material being sampled.</i> 	<ul style="list-style-type: none"> • In those drill holes where kimberlite was identified, composited 1m interval samples were collected. Individual samples varied in weight from 15kg to 200kg. • All drill chip samples were double bagged on site and transported to the Diamond Recovery Services Laboratory for processing. • Samples were washed and screened to minus 1mm, then tabled to produce a heavy mineral concentrate. Heavy liquid separation techniques are then used to upgrade the heavy mineral suite. The -1mm to 0.3mm fraction is visually observed to recover kimberlite indicator minerals. The minus 1mm fraction is then tabled to produce a heavy mineral concentrate. Heavy liquid separation techniques are then used to upgrade the heavy mineral suite.
Quality of assay data and laboratory tests	<ul style="list-style-type: none"> • <i>The nature, quality and appropriateness of the assaying and laboratory procedures used and whether the technique is considered partial or total.</i> • <i>For geophysical tools, spectrometers, handheld XRF instruments, etc., the parameters used in determining the analysis including instrument make and model, reading times, calibrations factors applied and their derivation, etc.</i> • <i>Nature of quality control procedures adopted (e.g. standards, blanks, duplicates, external laboratory checks) and whether acceptable levels of accuracy (i.e. lack of bias) and precision have been established.</i> 	<ul style="list-style-type: none"> • The processing of drill chips and loam samples for the recovery of heavy minerals including microdiamonds is undertaken by processing the minus 1mm fraction of the samples. Any plus 1mm material, particularly from the drill chips is kept for potential additional processing. • At this stage of the exploration the sampling of drill chips is being done to determine whether the kimberlite pipes are diamondiferous or not, and also to provide diamond indicator minerals for microprobe analysis. • As these analyses are not quantitative in nature, there is no requirement for standards and blanks. However there are quality control protocols in place to reduce the risk of sample contamination.

Criteria	JORC Code explanation	Commentary
Verification of sampling and assaying	<ul style="list-style-type: none"> • <i>The verification of significant intersections by either independent or alternative company personnel.</i> • <i>The use of twinned holes.</i> • <i>Documentation of primary data, data entry procedures, data verification, data storage (physical and electronic) protocols.</i> • <i>Discuss any adjustment to assay data.</i> 	<ul style="list-style-type: none"> • At this stage of the exploration the sampling of drill chips is being done to determine whether the kimberlite pipes are diamondiferous or not, and also to provide diamond indicator minerals for microprobe analysis. • As more than one sample is taken from each drill hole, this is considered adequate to provide confirmation of sample results at this early stage of the exploration. • Should significant results be reported from any of the samples then verification procedures would be employed, to ensure the validity of the results.
Location of data points	<ul style="list-style-type: none"> • <i>Accuracy and quality of surveys used to locate drill holes (collar and down-hole surveys), trenches, mine workings and other locations used in Mineral Resource estimation.</i> • <i>Specification of the grid system used.</i> • <i>Quality and adequacy of topographic control.</i> 	<ul style="list-style-type: none"> • As this is a preliminary exploration phase, survey of the all boreholes for the exploration programs was completed by using hand held GPS equipment. • All sites have been clearly identified for subsequent survey work to ensure accurate survey control for any project areas. • Datum GDA 94 and projection MGAZ52 was used. • As this is an early stage of exploration the topographic surface was also captured by GPS.
Data spacing and distribution	<ul style="list-style-type: none"> • <i>Data spacing for reporting of Exploration Results.</i> • <i>Whether the data spacing and distribution is sufficient to establish the degree of geological and grade continuity appropriate for the Mineral Resource and Ore Reserve estimation procedure(s) and classifications applied.</i> • <i>Whether sample compositing has been applied.</i> 	<ul style="list-style-type: none"> • No resources have been reported from these exploration data as diamonds have not reported to any of the kimberlite samples tested to date. • The sampling being undertaken is qualitative in nature, and would not be appropriate for any estimate of diamond grade, should diamonds be identified in any of the kimberlite bodies being tested. • Compositing of drill chip samples within individual drill holes was routinely done to ensure sufficient sample material was collected for the recovery of microdiamonds. This is appropriate as at this stage of the exploration the sampling is being done to determine whether the kimberlite pipes are diamondiferous or not, and also to provide diamond indicator minerals for microprobe analysis.
Orientation of data in relation to geological structure	<ul style="list-style-type: none"> • <i>Whether the orientation of sampling achieves unbiased sampling of possible structures and the extent to which this is known, considering the deposit type.</i> • <i>If the relationship between the drilling orientation and the orientation of key mineralised structures is considered to have introduced a sampling bias, this should be assessed and reported if material.</i> 	<ul style="list-style-type: none"> • The kimberlite pipes have been identified by the testing of magnetic anomalies by way of a single centrally located drill hole. • Because kimberlite pipes normally occur vertically plunging volcanic bodies, the testing of drill chips obtained from the central portion of the pipes is appropriate at this stage of the exploration

Criteria	JORC Code explanation	Commentary
		where testing for microdiamonds and confirmatory kimberlite indicator minerals is being undertaken.
Sample security	<ul style="list-style-type: none"> The measures taken to ensure sample security. 	<ul style="list-style-type: none"> Sample Security was ensured under a chain of custody between onsite personnel and the relevant laboratories being utilised.
Audits or reviews	<ul style="list-style-type: none"> The results of any audits or reviews of sampling techniques and data. 	<ul style="list-style-type: none"> Sampling was undertaken by trained personnel using industry standard procedures. The reconnaissance nature of the sampling did not warrant routine audit sampling of the lag/loam or drill spoil samples. Minanalytical Laboratories undertook internal audits and checks in line with the Australian standards and their NATA certification.

Section 2 Reporting of Exploration Results

Criteria	JORC Code explanation	Commentary
Mineral tenement and land tenure status	<ul style="list-style-type: none"> Type, reference name/number, location and ownership including agreements or material issues with third parties such as joint ventures, partnerships, overriding royalties, native title interests, historical sites, wilderness or national park and environmental settings. The security of the tenure held at the time of reporting along with any known impediments to obtaining a licence to operate in the area. 	<ul style="list-style-type: none"> Exploration took place on granted tenements E80/4235, E80/4407 and E80/4506 which are subject to Exploration and Land Access Agreements with the Tjamaru Tjamaru Aboriginal Corporation. E80/4235 and E80/4407 are held by Meteoric Resources. E80/4506 is held by J&J McIntyre on which Meteoric has rights to earn or acquire up to a 90% interest. GeoCrystal has earned a 51% interest in Meteoric's tenements and a 51% interest in Meteoric's rights on E80/4506. Heritage clearance surveys have been completed. Exploration took place on granted tenements with no known impediments to obtaining a licence to operate in the area.
Exploration done by other parties	<ul style="list-style-type: none"> Acknowledgment and appraisal of exploration by other parties. 	<ul style="list-style-type: none"> There has been no prior on ground exploration for diamond bearing kimberlite pipes in the tenement area.
Geology	<ul style="list-style-type: none"> Deposit type, geological setting and style of mineralisation. 	<ul style="list-style-type: none"> The exploration project area is located in the Lake McKay region of the Gibson Desert which is within the southern portion of the Webb 1:250,000 geological map. The stratigraphy of the project area is not well constrained due to paucity of data (drill hole and outcrop) but is thought to comprise

Criteria	JORC Code explanation	Commentary
		<p>recent fluvial, alluvial and aeolian deposits and a poorly developed surficial soil. These sediments are composed of sand, silt and clay. Areas to the east, west and south of the project tenements are mapped as being underlain by up to 1000m of the Proterozoic aged Heavytree Quartzite which in turn is overlain by limestone and dolomite of the Bitter Springs Formation and then by post Permian aged fluvial and deltaic sandstones, siltstones and mudstones known as the Angas Beds. These sequences are interpreted to overlay Archean aged basement rocks of the Arunta Complex</p> <ul style="list-style-type: none"> • The kimberlite pipes intrude the Proterozoic aged sediments and are overlain by the Angas Beds. The kimberlite bodies are discrete volcanic intrusives which occur within a cluster over an area of some 1000km².
Drill hole Information	<ul style="list-style-type: none"> • A summary of all information material to the understanding of the exploration results including a tabulation of the following information for all Material drill holes: <ul style="list-style-type: none"> ○ easting and northing of the drill hole collar ○ elevation or RL (Reduced Level – elevation above sea level in metres) of the drill hole collar ○ dip and azimuth of the hole ○ down hole length and interception depth ○ hole length. • If the exclusion of this information is justified on the basis that the information is not Material and this exclusion does not detract from the understanding of the report, the Competent Person should clearly explain why this is the case. 	<ul style="list-style-type: none"> • A list of the drill holes completed in the 2013 exploration program along with associated data is provided in Appendix 1.
Data aggregation methods	<ul style="list-style-type: none"> • In reporting Exploration Results, weighting averaging techniques, maximum and/or minimum grade truncations (e.g. cutting of high grades) and cut-off grades are usually Material and should be stated. • Where aggregate intercepts incorporate short lengths of high grade results and longer lengths of low grade results, the procedure used for such aggregation should be stated and some typical examples of such aggregations should be shown in detail. • The assumptions used for any reporting of metal equivalent values should be clearly stated. 	<ul style="list-style-type: none"> • Averaging techniques are not applicable to the current exploration results.
Relationship between	<ul style="list-style-type: none"> • These relationships are particularly important in the reporting of 	<ul style="list-style-type: none"> • As the kimberlite intrusions were identified from a centrally

Criteria	JORC Code explanation	Commentary
mineralisation widths and intercept lengths	<p><i>Exploration Results.</i></p> <ul style="list-style-type: none"> <i>If the geometry of the mineralisation with respect to the drill hole angle is known, its nature should be reported.</i> <i>If it is not known and only the down hole lengths are reported, there should be a clear statement to this effect (e.g. 'down hole length, true width not known').</i> 	<p>located drill hole, the areal extent and geometry of the pipes has not been determined other than by interpretation of the associated aeromagnetic data.</p>
Diagrams	<ul style="list-style-type: none"> <i>Appropriate maps and sections (with scales) and tabulations of intercepts should be included for any significant discovery being reported. These should include, but not be limited to a plan view of drill hole collar locations and appropriate sectional views.</i> 	<ul style="list-style-type: none"> Refer to the text and Appendix 1.
Balanced reporting	<ul style="list-style-type: none"> <i>Where comprehensive reporting of all Exploration Results is not practicable, representative reporting of both low and high grades and/or widths should be practiced to avoid misleading reporting of Exploration Results.</i> 	<ul style="list-style-type: none"> The drilling targeted discrete 'bulls-eye' aeromagnetic anomalies, interpreted from geophysical surveys. In most cases this approach has proved useful in identifying the kimberlite intrusions but in a few cases more detailed geology interpretation is required. This is a very early stage exploration program.
Other substantive exploration data	<ul style="list-style-type: none"> <i>Other exploration data, if meaningful and material, should be reported including (but not limited to): geological observations; geophysical survey results; geochemical survey results; bulk samples – size and method of treatment; metallurgical test results; bulk density, groundwater, geotechnical and rock characteristics; potential deleterious or contaminating substances.</i> 	<ul style="list-style-type: none"> A regional 400m line spaced aeromagnetic survey flown by the Geological Survey of WA was interpreted by RK Jones and Associates. It was this data that highlighted the presence of 'bulls-eye' magnetic anomalies which were interpreted to be intrusive bodies, possibly kimberlites. A detailed 150m line spaced aeromagnetic survey over a 65km² area was flown for Meteoric Resources in 2010. The data was interpreted by Southern Geoscience Consultants. This smaller survey provided more detailed magnetic data and allowed modelling of many of the 'bulls-eye' magnetic targets. A limited trial VTEM survey comprising 174.3 line km was flown in selected areas of the project area. This survey was aimed at highlighting discrete conductive bodies that may not have an associated magnetic response.
Further work	<ul style="list-style-type: none"> <i>The nature and scale of planned further work (e.g. tests for lateral extensions or depth extensions or large-scale step-out drilling).</i> 	<ul style="list-style-type: none"> Drill testing of untested magnetic anomalies will continue aimed at confirming the presence of kimberlite and providing material to test for the presence of diamonds.

Section 5 Estimation and Reporting of Diamonds and Other Gemstones

Criteria	JORC Code explanation	Commentary
Indicator minerals	<ul style="list-style-type: none"> Reports of indicator minerals, such as chemically/physically distinctive garnet, ilmenite, chrome spinel and chrome diopside, should be prepared by a suitably qualified laboratory. 	<ul style="list-style-type: none"> Indicator minerals including microdiamonds have been identified and described by Global Diamond Exploration Services Pty Ltd.
Source of diamonds	<ul style="list-style-type: none"> Details of the form, shape, size and colour of the diamonds and the nature of the source of diamonds (primary or secondary) including the rock type and geological environment. 	<ul style="list-style-type: none"> No commercially sized diamonds have been recovered from any of the exploration samples.
Sample collection	<ul style="list-style-type: none"> Type of sample, whether outcrop, boulders, drill core, reverse circulation drill cuttings, gravel, stream sediment or soil, and purpose (e.g. large diameter drilling to establish stones per unit of volume or bulk samples to establish stone size distribution). Sample size, distribution and representivity. 	<ul style="list-style-type: none"> No samples have been collected to specifically test for commercial diamond grade.
Sample treatment	<ul style="list-style-type: none"> Type of facility, treatment rate, and accreditation. Sample size reduction. Bottom screen size, top screen size and re-crush. Processes (dense media separation, grease, X-ray, hand-sorting, etc). Process efficiency, tailings auditing and granulometry. Laboratory used, type of process for micro diamonds and accreditation. 	<ul style="list-style-type: none"> No samples have been processed specifically for the recovery of commercially sized diamonds.
Carat	<ul style="list-style-type: none"> One fifth (0.2) of a gram (often defined as a metric carat or MC). 	<ul style="list-style-type: none"> No commercially sized diamonds have been recovered from any of the exploration samples.
Sample grade	<ul style="list-style-type: none"> Sample grade in this section of Table 1 is used in the context of carats per units of mass, area or volume. The sample grade above the specified lower cut-off sieve size should be reported as carats per dry metric tonne and/or carats per 100 dry metric tonnes. For alluvial deposits, sample grades quoted in carats per square metre or carats per cubic metre are acceptable if accompanied by a volume to weight basis for calculation. In addition to general requirements to assess volume and density there is a need to relate stone frequency (stones per cubic metre or tonne) to stone size (carats per stone) to derive sample grade (carats per tonne). 	<ul style="list-style-type: none"> No commercially sized diamonds have been recovered from any of the exploration samples. No samples have been collected to specifically test for commercial diamond grade.
Reporting of Exploration	<ul style="list-style-type: none"> Complete set of sieve data using a standard progression of sieve sizes per facies. Bulk sampling results, global sample grade per 	<ul style="list-style-type: none"> No commercially sized diamonds have been recovered from any

Criteria	JORC Code explanation	Commentary
Results	<p><i>facies. Spatial structure analysis and grade distribution. Stone size and number distribution. Sample head feed and tailings particle granulometry.</i></p> <ul style="list-style-type: none"> • <i>Sample density determination.</i> • <i>Per cent concentrate and undersize per sample.</i> • <i>Sample grade with change in bottom cut-off screen size.</i> • <i>Adjustments made to size distribution for sample plant performance and performance on a commercial scale.</i> • <i>If appropriate or employed, geostatistical techniques applied to model stone size, distribution or frequency from size distribution of exploration diamond samples.</i> • <i>The weight of diamonds may only be omitted from the report when the diamonds are considered too small to be of commercial significance. This lower cut-off size should be stated.</i> 	<p>of the exploration samples.</p> <ul style="list-style-type: none"> • No samples have been collected to specifically test for commercial diamond grade.
Grade estimation for reporting Mineral Resources and Ore Reserves	<ul style="list-style-type: none"> • <i>Description of the sample type and the spatial arrangement of drilling or sampling designed for grade estimation.</i> • <i>The sample crush size and its relationship to that achievable in a commercial treatment plant.</i> • <i>Total number of diamonds greater than the specified and reported lower cut-off sieve size.</i> • <i>Total weight of diamonds greater than the specified and reported lower cut-off sieve size.</i> • <i>The sample grade above the specified lower cut-off sieve size.</i> 	<ul style="list-style-type: none"> • No commercially sized diamonds have been recovered from any of the exploration samples. • No samples have been collected to specifically test for commercial diamond grade.
Value estimation	<ul style="list-style-type: none"> • <i>Valuations should not be reported for samples of diamonds processed using total liberation method, which is commonly used for processing exploration samples.</i> • <i>To the extent that such information is not deemed commercially sensitive, Public Reports should include:</i> <ul style="list-style-type: none"> ○ <i>diamonds quantities by appropriate screen size per facies or depth.</i> ○ <i>details of parcel valued.</i> ○ <i>number of stones, carats, lower size cut-off per facies or depth.</i> • <i>The average \$/carat and \$/tonne value at the selected bottom cut-off should be reported in US Dollars. The value per carat is of critical importance in demonstrating project value.</i> • <i>The basis for the price (e.g. dealer buying price, dealer selling price, etc).</i> 	<ul style="list-style-type: none"> • No commercially sized diamonds have been recovered from any of the exploration samples.

Criteria	JORC Code explanation	Commentary
	<ul style="list-style-type: none"> <i>An assessment of diamond breakage.</i> 	
Security and integrity	<ul style="list-style-type: none"> <i>Accredited process audit.</i> <i>Whether samples were sealed after excavation.</i> <i>Valuer location, escort, delivery, cleaning losses, reconciliation with recorded sample carats and number of stones.</i> <i>Core samples washed prior to treatment for micro diamonds.</i> <i>Audit samples treated at alternative facility.</i> <i>Results of tailings checks.</i> <i>Recovery of tracer monitors used in sampling and treatment.</i> <i>Geophysical (logged) density and particle density.</i> <i>Cross validation of sample weights, wet and dry, with hole volume and density, moisture factor.</i> 	<ul style="list-style-type: none"> There was no requirement for sample security.
Classification	<ul style="list-style-type: none"> <i>In addition to general requirements to assess volume and density there is a need to relate stone frequency (stones per cubic metre or tonne) to stone size (carats per stone) to derive grade (carats per tonne). The elements of uncertainty in these estimates should be considered, and classification developed accordingly.</i> 	<ul style="list-style-type: none"> No commercially sized diamonds have been recovered.